



**THE CUTTING EDGE OF DRIVING LIMITS**





**BLAZE (S001)**  
17x7.5, 18x8



**INFERNO (S003)**  
17x7.5



**RAZE (S004)**  
17x7.5, 18x8



**FLASH II (S005)**  
17x7.5, 18x7.5



**INFINITUM (S018)**  
17x7.5, 18x8  
19x8, 20x8.5



**MULTYSPOKE (S019)**  
17x7.5, 18x8, 19x8.5  
19x9.5, 20x8.5, 20x9.5, 22x8.5, 22x9.5  
**SGL**



**FROST (S021)**  
14x5, 14x6, 15x6.5, 16x7



**CYNIK (S022)**  
15x6.5, 16x7



**PHAZE (S033)**  
15x6.5



**MESH (S038)**  
17x7.5, 18x8, 18x9  
19x8.5, 19x9.5, 19x10.5  
**SGL**



**STAR (S039)**  
15x6.5, 16x7, 17x7, 18x7.5  
**SGL**



**CINCO (S040)**  
15x6.5, 16x7



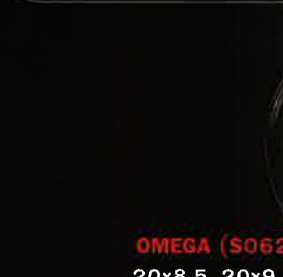
**SURGE (S056)**  
14x6, 15x6.5



**STING II (S057)**  
15x6.5, 16x7, 17x7



**ALPHA (S061)**  
19x8.5, 19x9.5



**OMEGA (S062)**  
20x8.5, 20x9.5  
**SGL**



ETERNITY (S007)  
15x6.5, 16x7, 17x7



HASTE (S010)  
15x6.5, 16x7, 17x7



COSMO (S011)  
15x6.5, 16x7, 17x7



VIGOR (S025)  
17x7, 18x7.5



FUSION (S028)  
17x7.5, 18x8



SNIPER (S029)  
15x6.5, 16x7



HULK (S041)  
15x6.5, 16x7, 17x7, 18x7.5



TWIN (S042)  
15x6.5, 16x7, 17x7, 18x7.5  
SBL



SINARA (S043)  
17x7.5, 18x8  
SBL



IMAGINE (S066)  
17x7.5, 18x8, 19x8.5  
19x9.5, 20x8.5, 20x9.5, 20x10.5  
SBL



EMOTION (S067)  
18x8  
SBL



DAZZLE (S069)  
17x7, 18x7.5





**ECLIPSE (S012)**  
19x8, 20x7.5



**TREX (S013)**  
15x6.5, 16x7, 17x7, 18x8



**TORQUE (S016)**  
13x5.5, 14x6, 15x6.5



**ZENITH (S017)**  
17x7



**NIRVANA (S030)**  
15x6.5, 16x7  
17x7, 18x7.5



**SLAY (S031)**  
14x5.5



**SPHERE (S032)**  
15x6.5, 16x7, 17x7



**VIRUS (S047)**  
17x7.5, 18x7.5



**SPEED (S048)**  
17x7, 18x7.5, 18x8  
18x9, 19x8, 19x9



**MIST (S054)**  
18x8



**NANO (S055)**  
14x5, 14x5.5, 15x6, 15x6.5



**MAJESTIC (S070)**  
17x7, 18x7.5



**SABRE (S074)**  
16x7, 16x8, 17x7



**RAPTOR (S075)**  
17x7.5, 18x8, 18x9, 19x8.5  
19x9.5, 20x8.5, 20x9.5, 22x8.5, 22x9.5

**SBL**

# LIGHT TRUCK



**CYCLONE (S014)**  
14x6, 15x8, 16x8



**TRITON (S015)**  
15x8, 16x8



**INFINITUM (S018A)**  
17x8, 18x8.5  
20x9, 22x10  
*SCL*



**VALOUR (S027)**  
17x8



**STORM (S035)**  
15x7.5, 17x7.5



**XENA (S036)**  
18x8.5, 20x9



**HURRICANE (S037)**  
18x8.5, 20x9



**SPIKE (S053)**  
15x7.5



**HORNET (S058)**  
15x7.5, 18x8.5



**SENATO II (S063)**  
20x8.5  
*SCL*



**CARIBBEAN (S080)**  
17x8



*SCL* : STAINLESS CHROME LIP

## COLOR CODE



ANODIZE  
GOLD



ANODIZE  
GREY



ANODIZE  
BRONZE



GOLD



BRONZE



GUN  
METAL



HYPER  
BLACK



HYPER  
SILVER



SILVER



**FALKEN**



**STAMFORD** Tyres

บริษัท สแตมฟอร์ด ไทرس ดิสทริบิวเตอร์ จำกัด  
2210/16-17 ถนนราธิวาสราชนครินทร์  
แขวงช่องนนทรี เขตยานนาวา กรุงเทพฯ 10120  
โทร. (662) 02-6782355 แฟกซ์. (662) 02-6782351

VIA JLL JLL-T



ISO 9001 :2000  
ISO/TS 16949 :2002

